



April 20, 2016

Project Update – Division 7

Cheryl McQueary, Board Member

Mike Mills, PE, Division Engineer

Division 7 Team



Division 7 - Stats



- **Employees** - 540 Permanent
- **Road Miles** - 5,417
- **Bridges** - 1,032
- **Airports** - 3
- **Rail Stations** - 3
- **Interstates** - 4
- **Welcome Centers** - 1
- **Population** - 893,348



Division 7 2012-2025 STIP Summary

- | | | |
|------------|--------------|-----------------|
| • Highway | 117 projects | \$ 973 million |
| • Aviation | 8 projects | \$ 64 million |
| • Bike/Ped | 9 projects | \$ 28 million |
| • Rail | 2 projects | \$ 8 million |
| • Transit | 72 projects | \$ 508 million |
| • Total: | 208 projects | \$1.580 billion |
- Programmed amounts include all sources



Aviation

- **Piedmont International (PTI)**
 - Cessna
 - Federal Express
 - HAECO
 - Honda Aircraft
- **Burlington-Alamance**
 - GE Honda Aero Engines
- **Rockingham**



PTI Airport



Honda Aircraft



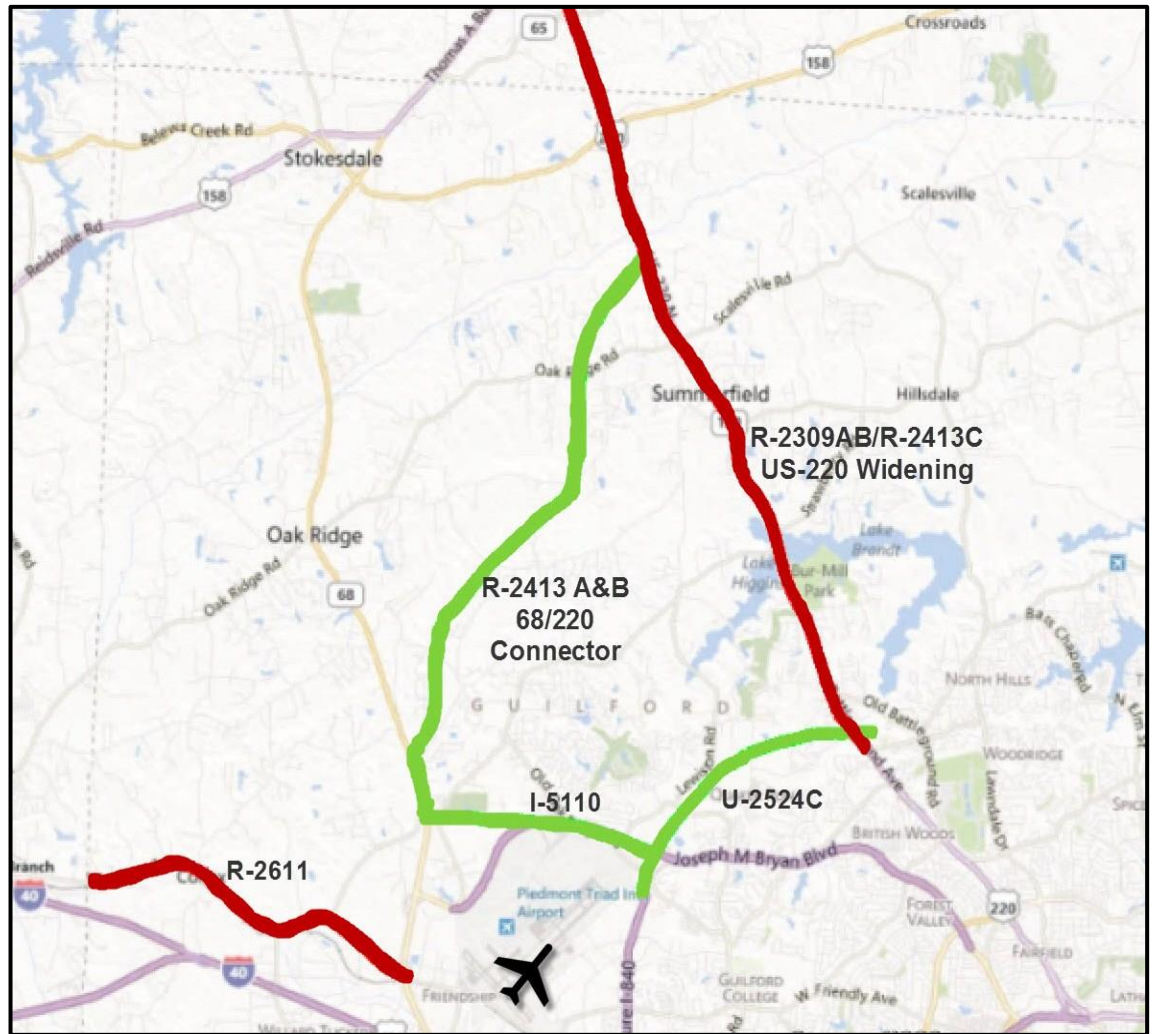
HAECO America Airframe Service

- **Global MRO**
- **600,000 sq ft facility**
- **3 wide-body hangers
1 narrow-body hanger**
- **1600 employees in
Triad**
- **Adding 200 employees
in High Point facility**
- **Adding 177,000 sq ft
facility at PTI with
400 employees**



Greensboro Highway Projects

- 4 projects shown on map
 - Widening of US-220
 - Western Loop
 - Reroute of Bryan Blvd
 - Connecting NC 68 and US 220
- Eastern Loop



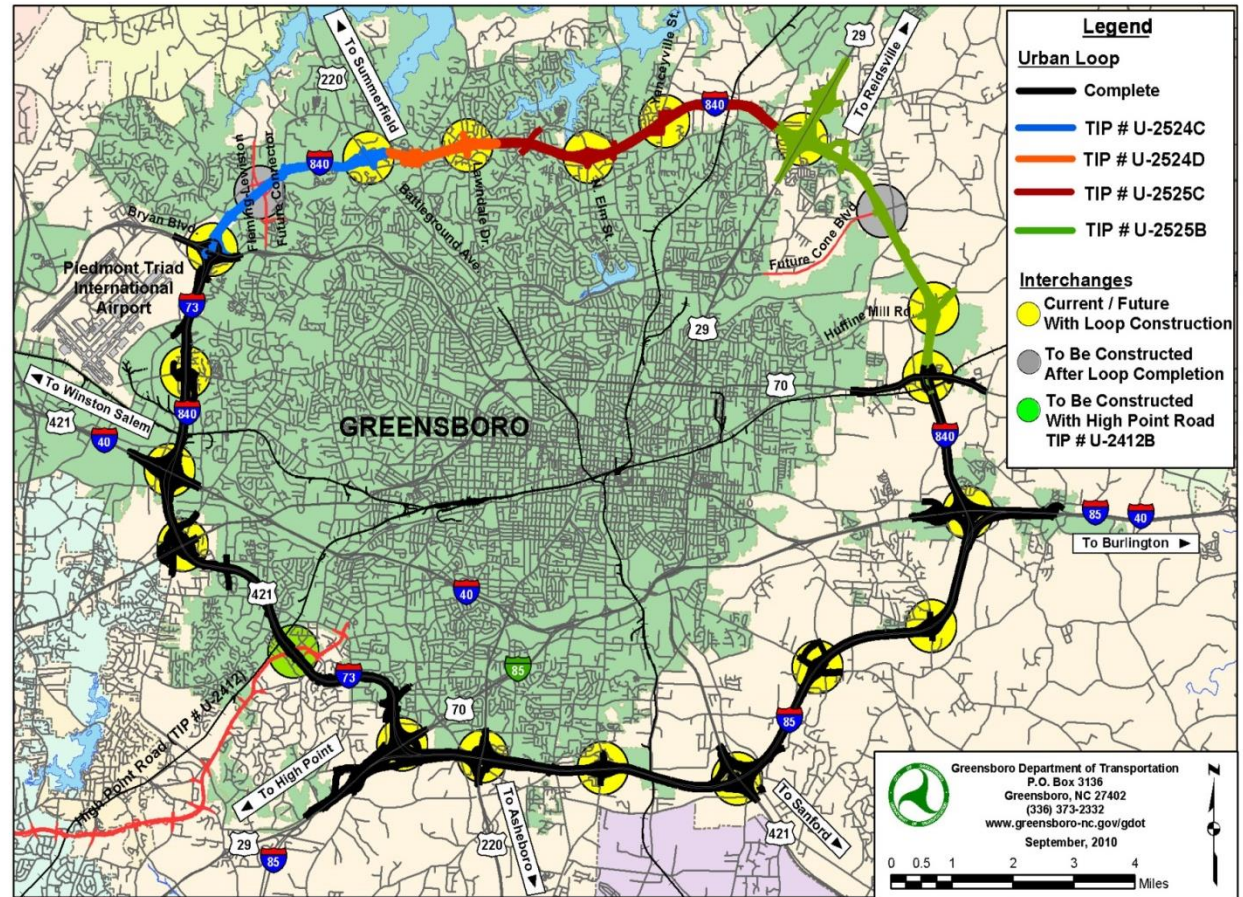
PTI Airport

- **Rerouting Bryan Blvd connecting to NC 68**
- **Beginning of NC 68 to US 220 Connector**



Greensboro Urban Loop

- Lower half of the Loop is completed (black line)
- Western end is under construction (blue line)
- Eastern end is under construction (green line)
- Northern end in two parts (orange and red lines)



Greensboro Loop - Western End

- **5 miles in length,**
- **6 bridges**
- **\$123 Million investment**
- **Began Construction in October 2013**
- **Open to Traffic September 2017**
- **One of the longest bridge spans over a wetland in NC**
- **Span is approx. 0.8 miles in length**



Greensboro Loop - Eastern End

- **5 miles in length**
- **14 bridges**
- **\$112 Million investment**
- **Began Construction July 2014**
- **Open to Traffic July 2018**

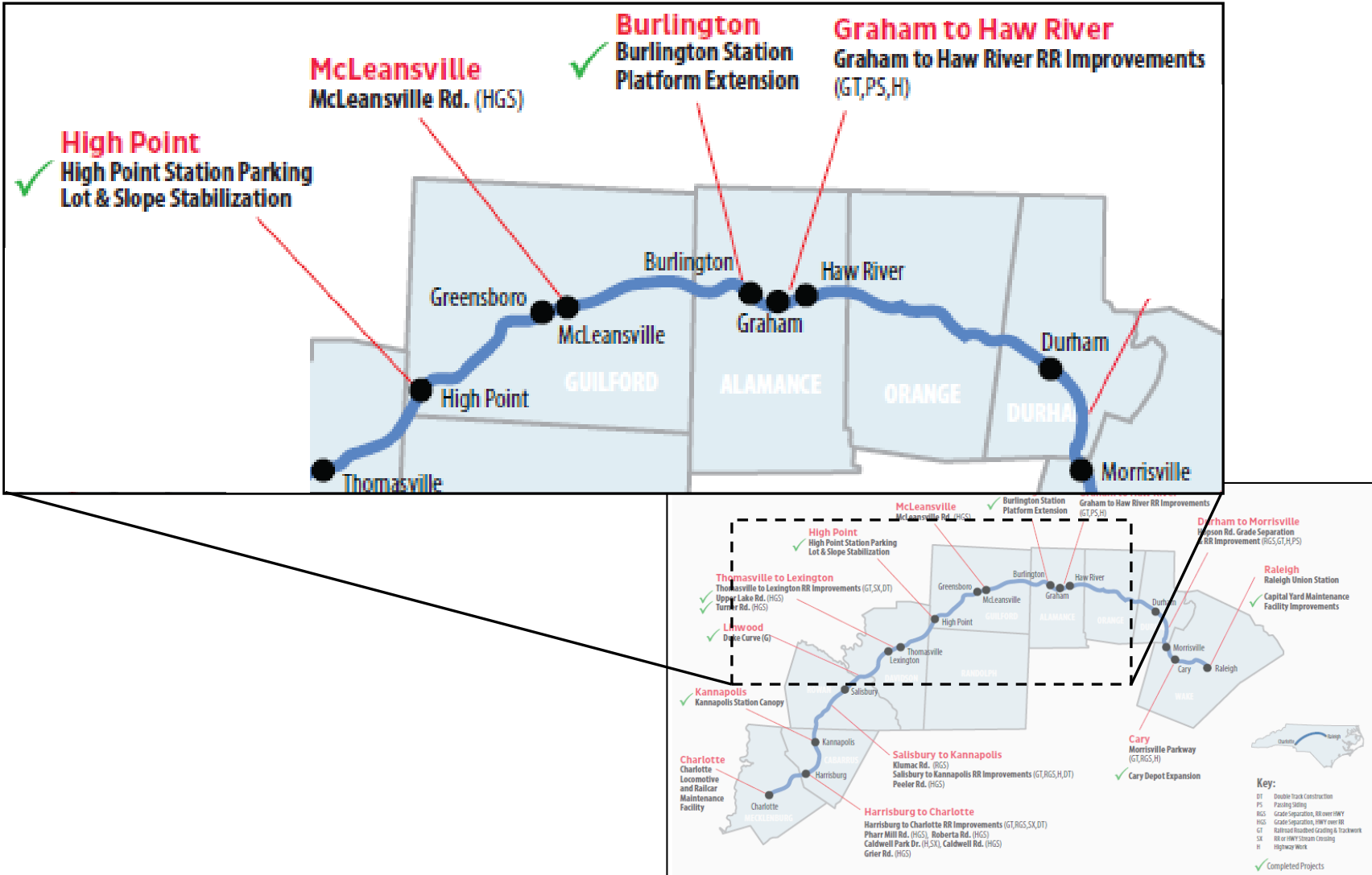


NC 220 North Widening

- **13 miles, 11 bridges**
- **\$96 Million investment**
- **Began Construction
April 2012**
- **Open to Traffic
December 2016**



Piedmont Improvement Projects



McLeansville Road Grade Rail Project

- **Grade Separation and Highway Improvements**
- **\$7.4 Million investment**
- **Began construction November 2014**
- **Completion February 2017**

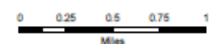


Bike and Ped

- #1 Bike and Ped Statewide project
- 4 mile path
- P3 project between City of Greensboro and Action Greensboro
- \$171.4 M planned, underway and completed economic development



- Public Art Cornerstones
- Downtown Greenway
- Existing Trails/Greenways
- Planned Trails/Greenways
- Railroad
- Signed Bike Routes
- Buildings
- Colleges & Universities
- Parks & Green Space



Downtown Greensboro Greenway



Downtown Greensboro Greenway



Contact Information



Cheryl McQueary
Board Member
NC DOT Board of Transportation

clmcqueary@ncdot.gov
336-487-0000

