



Division 8 Highlights

PTRPO

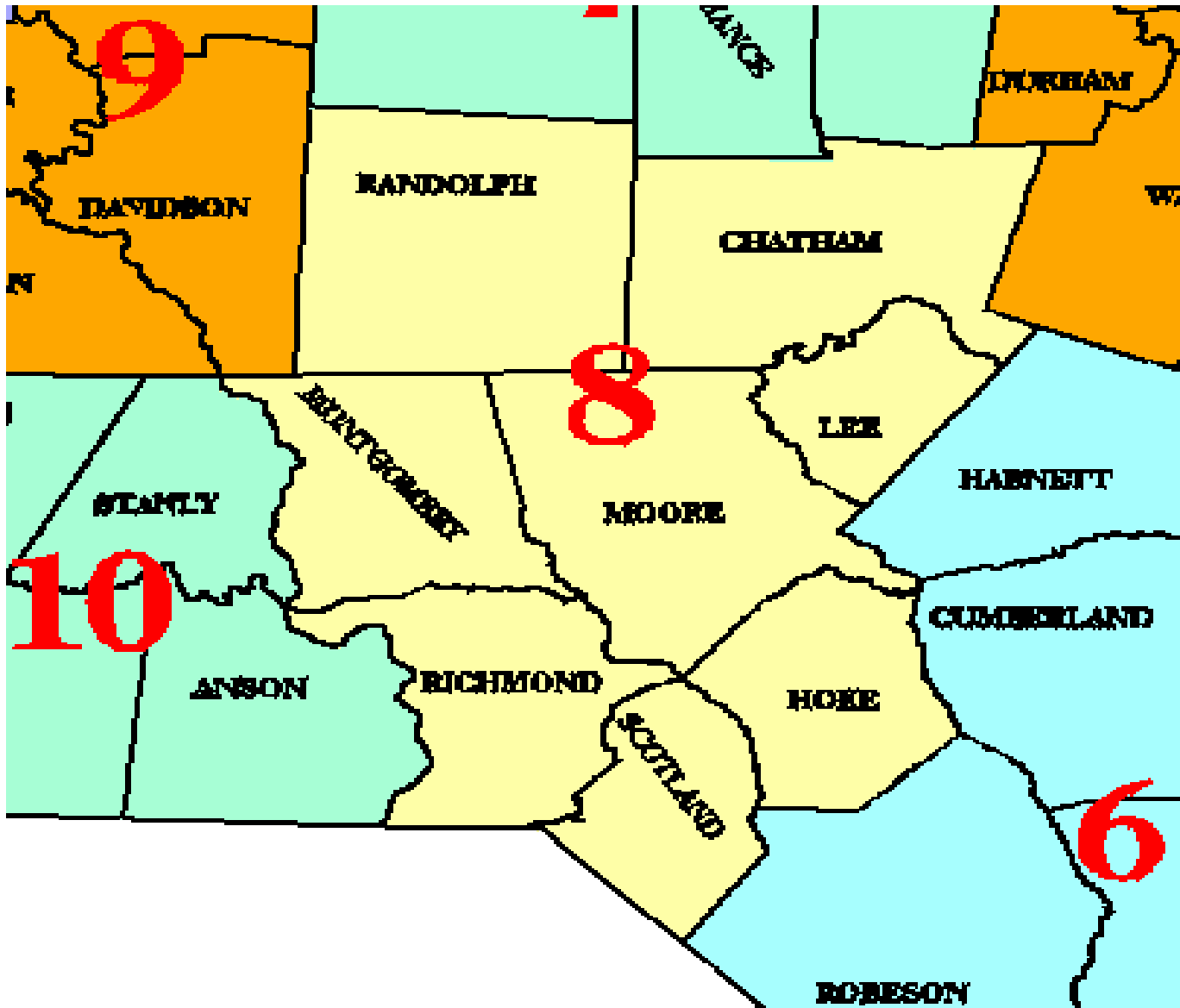
February 17, 2016

Pat Molamphy, Division 8 Board Member



# Division 8

Randolph  
Chatham  
Lee  
Moore  
Montgomery  
Richmond  
Scotland  
Hoke



Asheboro  
Siler City  
Sanford  
Pinehurst  
Southern Pines  
Aberdeen  
Rockingham  
Laurinburg

531 Employees



# Visit Division 8



# *Division 8 Economic Development*

- Chatham-Siler City Advanced Manufacturing Site
- Greensboro-Randolph Megasite
- Enviva Biomass
- Chatham Park

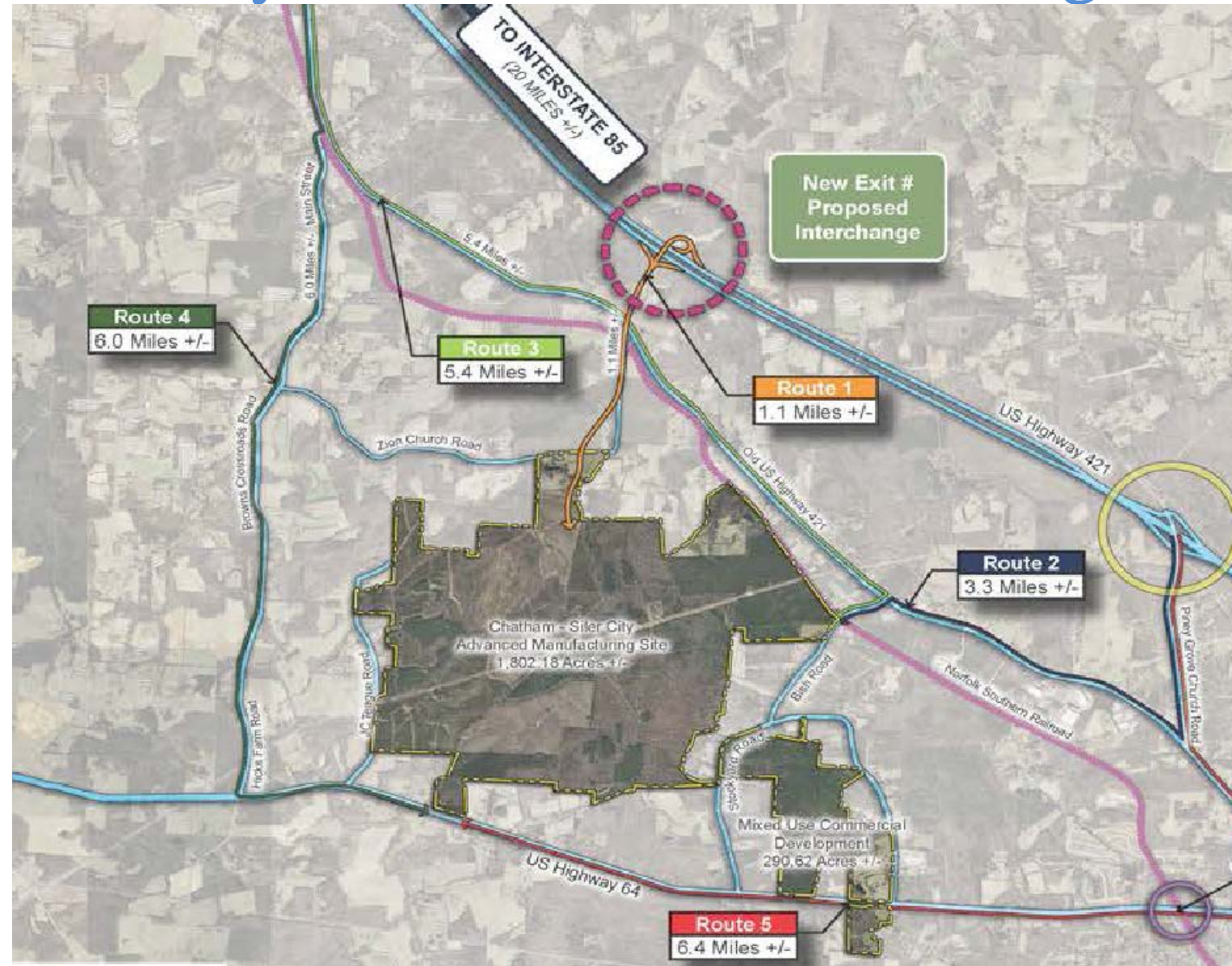


# Chatham-Siler City Advanced Manufacturing Site



# Chatham-Siler City Advanced Manufacturing Site

- 1,800 Acre Manufacturing Site
- 290 Acre Mixed/Use Support Site
- Certified



# Greensboro-Randolph Megasite

- Joint effort between City of Greensboro and Randolph County
- 1,450 Acre Manufacturing Site

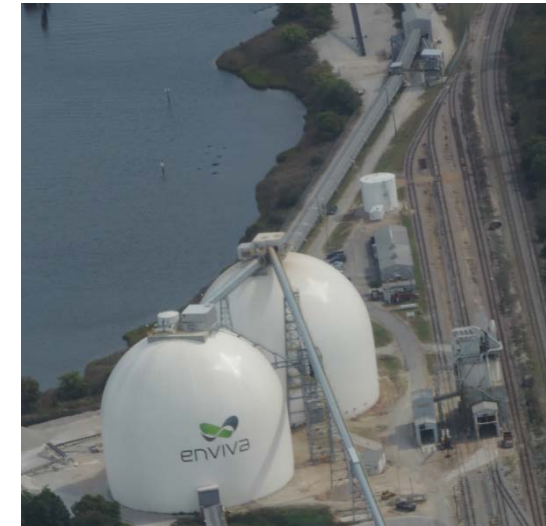


# Enviva Biomass – Richmond County

- World's largest producer of wood pellets
- \$107M Investment
- 80 Jobs
- Avg Salary \$37,961
- Other NC facilities in Ahoskie, Northampton County, Sampson County and Port of Wilmington



Richmond County  
Population: 46,405 (2013)  
Unemployment: 7.3%  
(4/2015)  
Avg Salary: \$30,788



# Chatham Park - Pittsboro

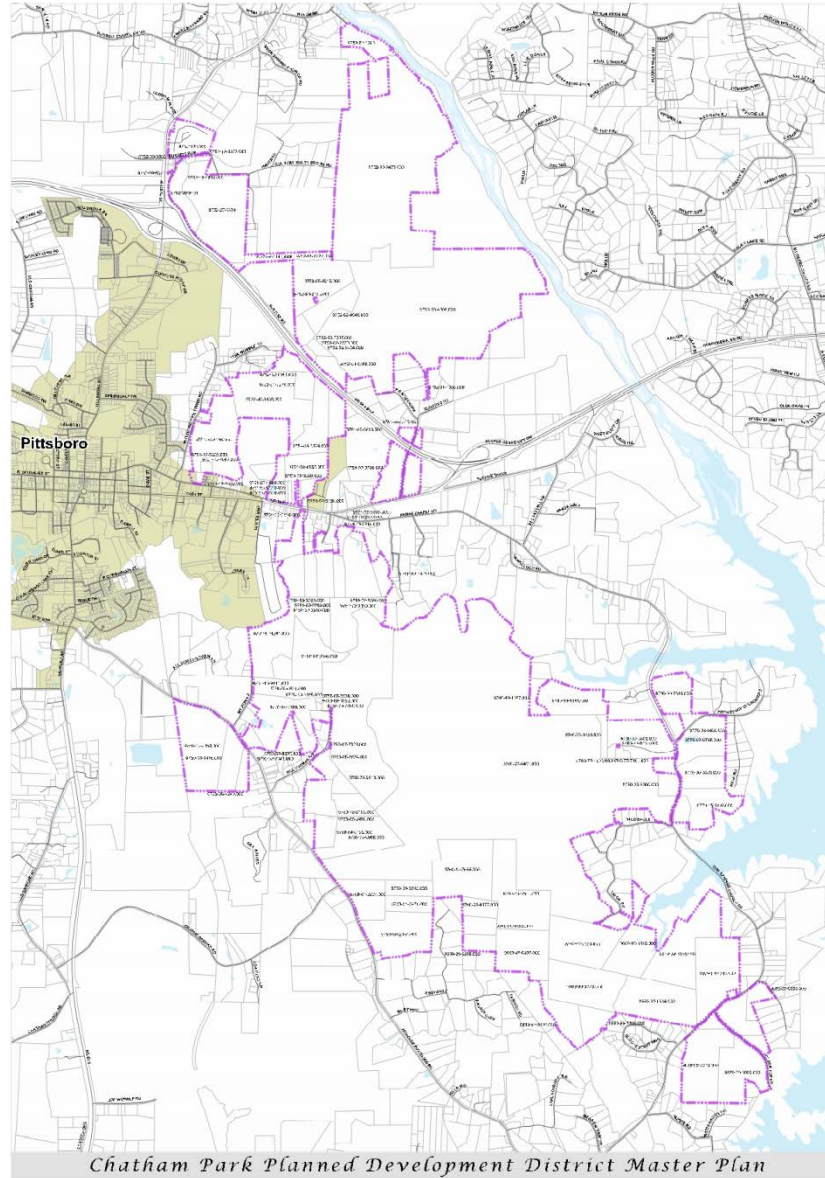
- Development spurred by Jim Goodnight (SAS) and Preston Development
- 7,000+ Acre Planned Development
- Currently building new overpass which will convert to an interchange on US 64 Bypass



# Chatham Park - Pittsboro

Per NCSU Economist  
Mike Walden

- over 40 year buildout
- could generate \$154B spending statewide and over \$80B in Chatham County alone
- 61,000 jobs in Chatham County



Pittsboro Population:  
3,764 in Town Limits  
2,983 in ETJ

Chatham Park could add  
60,000 residents

22,000 new homes and  
millions of sq.ft. of labs,  
office and retail space



# Division 8 Highway Project Highlights

- R-2536 Asheboro Bypass US 64
- R-0623 Troy Bypass NC 24/27
- R-3421 Rockingham Bypass I-73/74/US 220
- I-5899A Future I-74



# R-2536 Asheboro Bypass

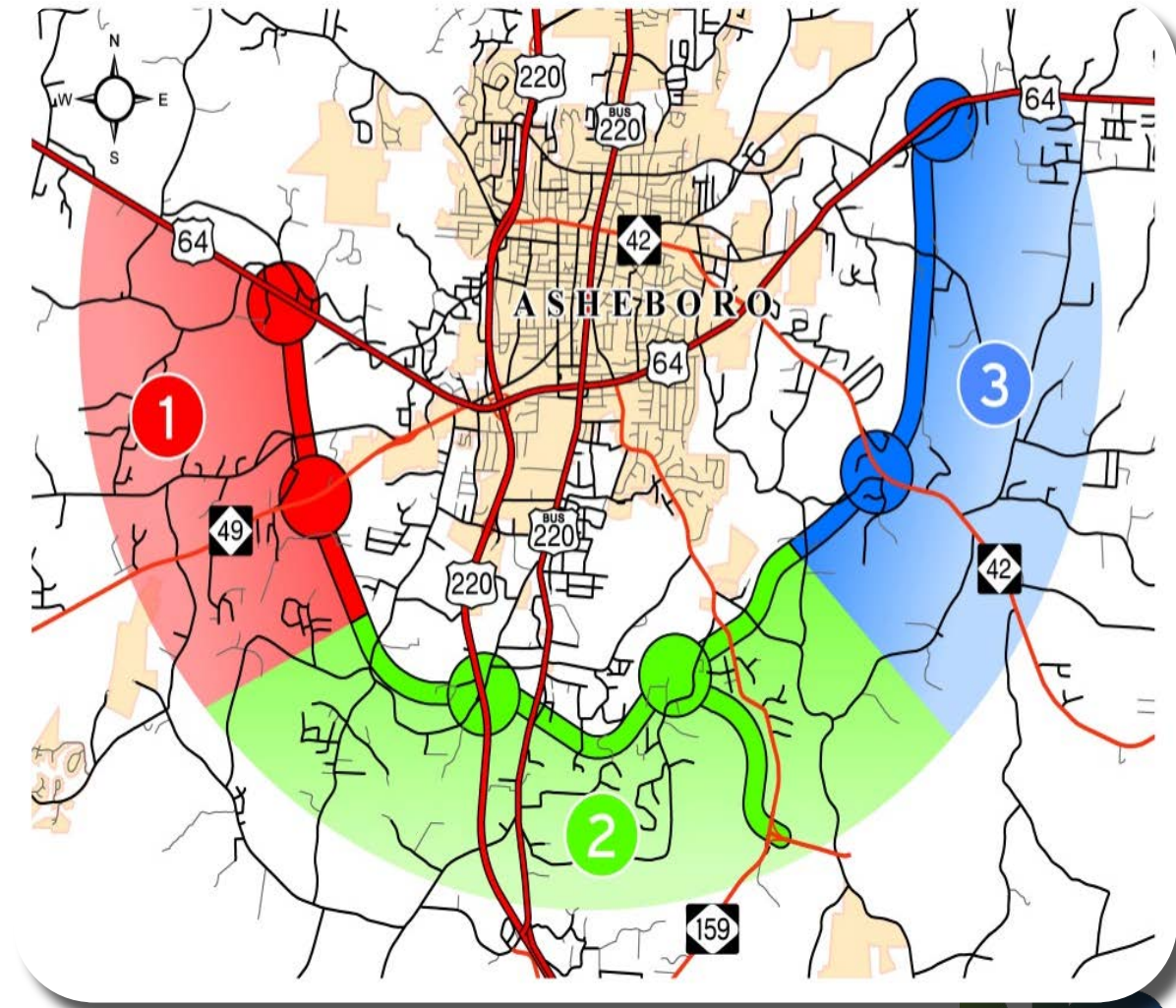


- 14.6 Mile US 64 Bypass and 1.8 mile connector to the NC Zoo
- Integral part of NCDOT's plan to upgrade the US 64 and NC 49 corridors from Statesville to Raleigh (US 64) and Charlotte to Raleigh (NC 49 and US 64)
- \$244 Million Design-Build Contract awarded in June 2015
- Over \$61 Million Right of Way Costs



# Asheboro Bypass Highlights

- Construction to begin July 2016
- Estimated completion late 2019
- 6 interchanges
- 24 bridges and box culverts
- 8 million cubic yards of earth and rock excavation – Enough to fill over 5 Panthers stadiums from bottom to top
- 600,000 manhours



# Asheboro Bypass Highlights

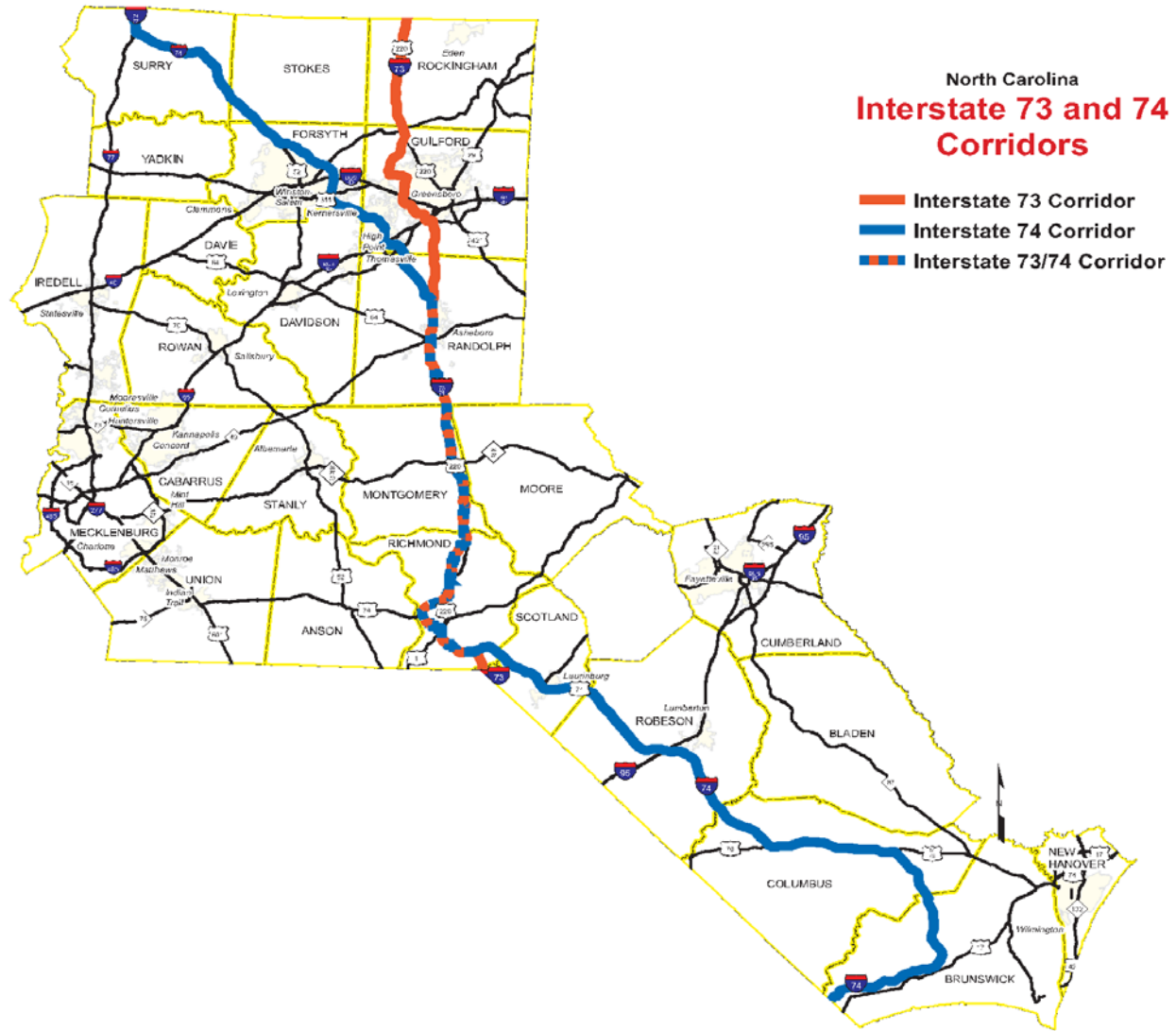
- **Area near the NC Zoo Connector - Interior Bents will have square columns and Elephant Logos in the ends of cap. MSE Walls and outside face of barriers will utilize a 'Drystack' stone pattern stained three different colors.**

## R-0623 Troy Bypass

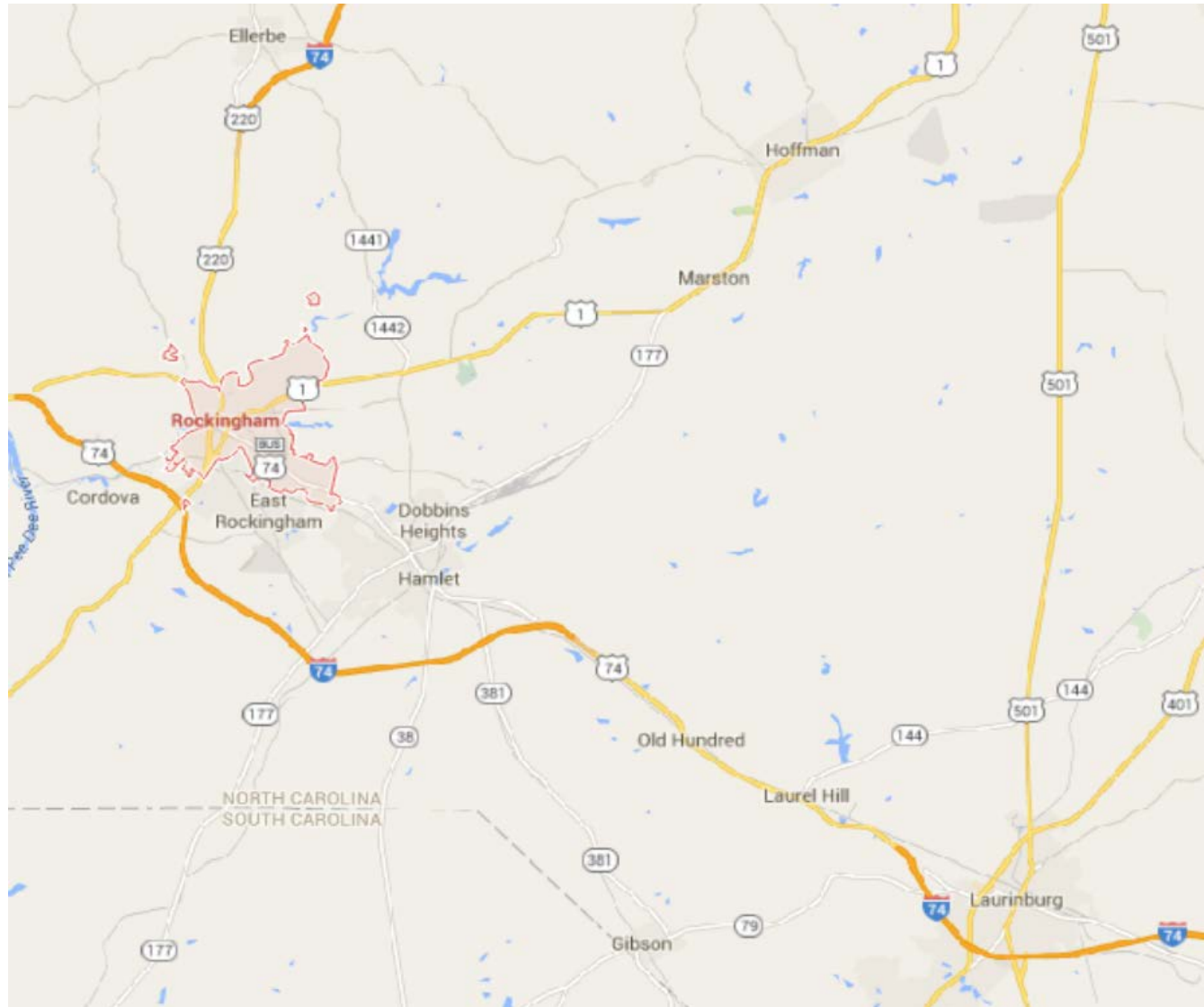
- NC 24/27 Bypass of Troy, NC in Montgomery County
- 6.65 Miles
- Contract Awarded 12/30/14 to J.T. Russell & Sons, Inc.
- \$45,066,522
- Completion Early 2019



# I-73/74 Corridor R-3421 Rockingham Bypass & I-5899A



# I-73/74 Corridor R-3421 Rockingham Bypass & I-5899A



# R-3421 Rockingham Bypass I-73/74 Corridor

- Divided into A, B, C Projects
- Over \$180M Investment



# R-3421 Rockingham Bypass I-73/74 Corridor

- R-3421C
- 3.724 Miles
- Upgrades existing US 220 to Interstate Standards
- Contract Awarded 2/18/14 to WC English
- \$49,840,728
- Completion late 2017



- R-3421 A & B
- Connects two existing I-74 segments
- unfunded in P3.0
- High Priority for the Division in P4.0
- Shovel Ready

# I-5899A I-73/74 Corridor

- Added to STIP with HB 97
- Connects Rockingham Bypass with Laurinburg Bypass
- \$87M Investment
- R/W and Construction in 2022



# Commitment to Improve Safety Morganton Road at Fire Lane Signal Installation-Southern Pines SS-4908AV

Major crossing to AC Sandhills  
Soccer park

- Over 580 ped crossings on Saturdays
- Previous 5-years: 4 Pedestrian crashes including 1 Fatality



# Commitment to Improve Safety Morganton Road at Fire Lane Signal Installation-Southern Pines SS-4908AV

Major crossing to AC Sandhills  
Soccer park

- Coordinated with Duke Power to install lighting
- NCDOT installed traffic signal with pedestrian phases
- Funded, designed and constructed in 4 months-2015



# Commitment to Improve Safety

## US 1 at US 15-501 – Sanford W-5513



# Commitment to Improve Safety

## US 1 at US 15-501 – Sanford W-5513

From August 2007 to July 2012

- 67 Total Crashes
- 2 Wrong Way Driver Fatalities



# Commitment to Improve Safety

## US 1 at US 15-501 – Sanford W-5513

July 9, 2011, Near 3pm

63 year old woman unfamiliar with area

Merged onto US 1 driving north in southbound lanes

David Spears, wife and son hit head-on

David's wife and son escape and survive,

David is knocked unconscious and perishes when vehicle burst into flames.



# Commitment to Improve Safety

## US 1 at US 15-501 – Sanford W-5513



# Commitment to Improve Safety

## US 1 at US 15-501 – Sanford W-5513

Highway Safety  
Improvement Project

Work began March 2015

Completed December 2015

\$2.5M Investment



QUESTIONS?

